

Light efficiency:

99 Lumen/Watt

Light quality:

CRI: 92.9

Color temperature:

3050 K

Output: 2653 lm

Peak: 3326 cd

Power: 26.7 W

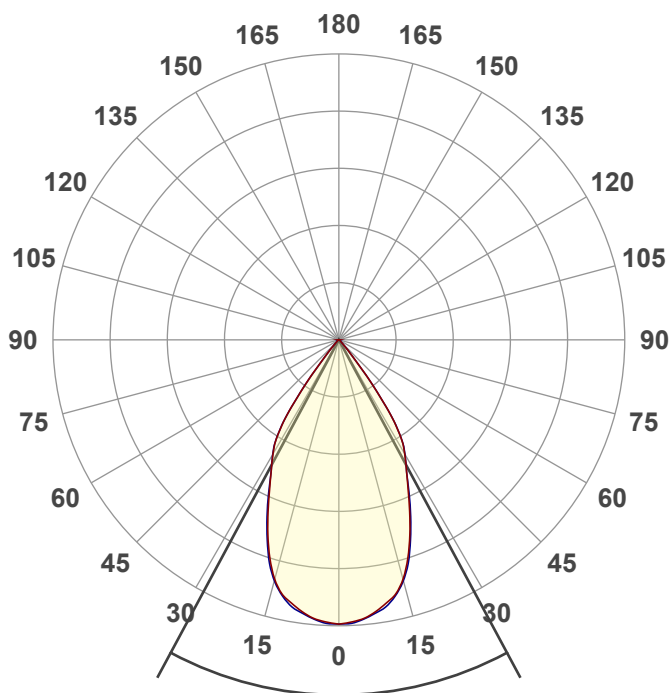
PF: 0.99



EXT-6D-SW-30LM-30K-90-55D

Date and time:

11/14/2023 11:04:12 AM



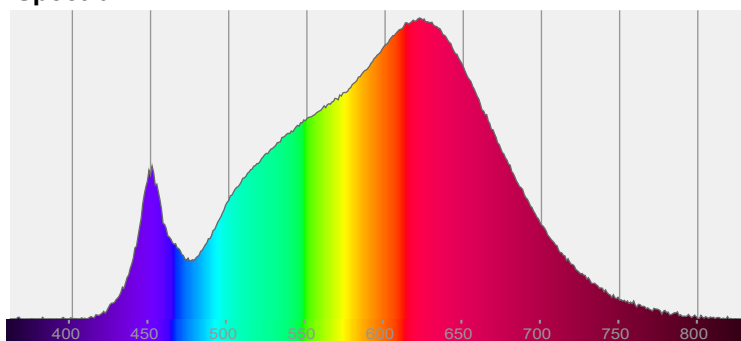
Beam angle

56.5°

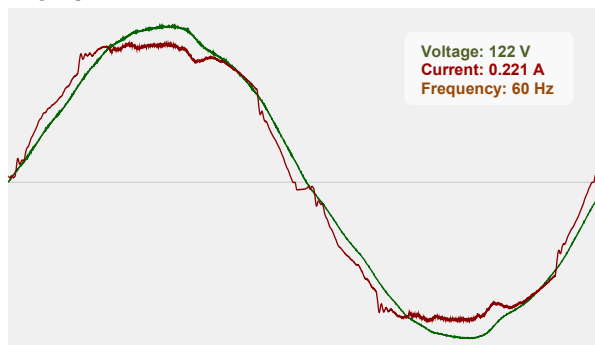


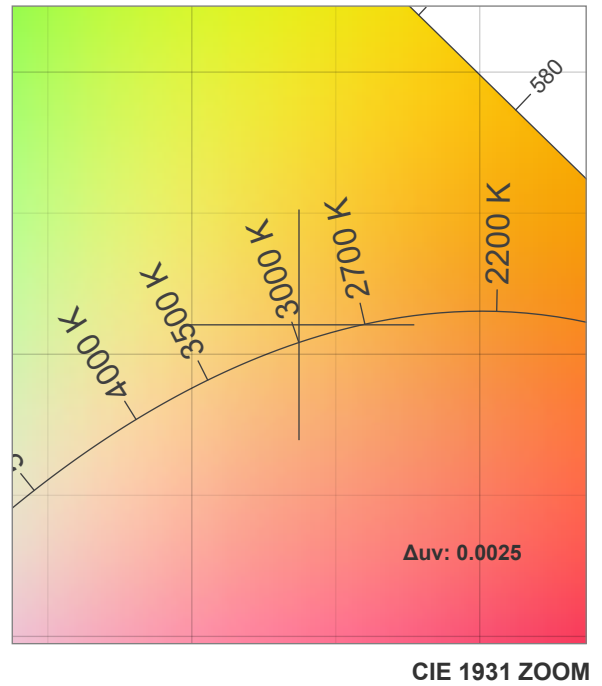
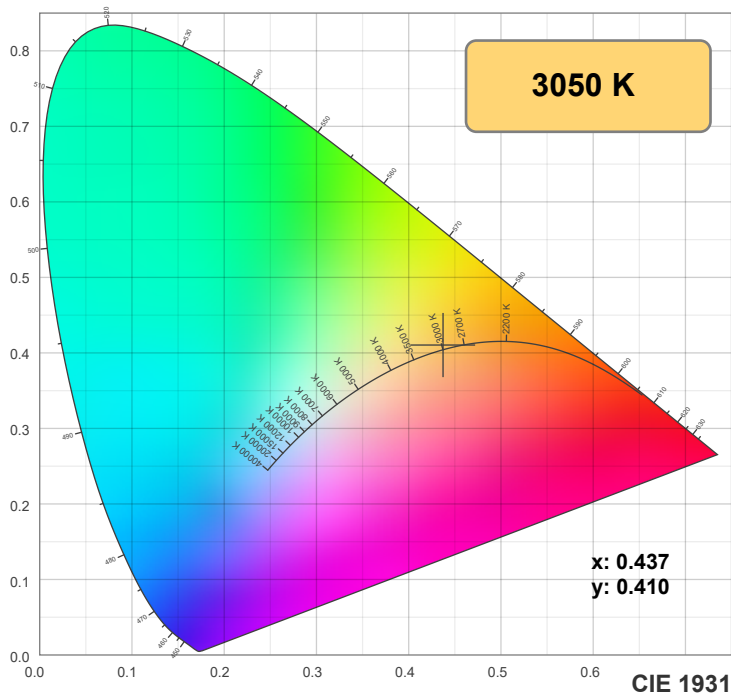
CIE 1931
x: 0.437
y: 0.410

Spectra

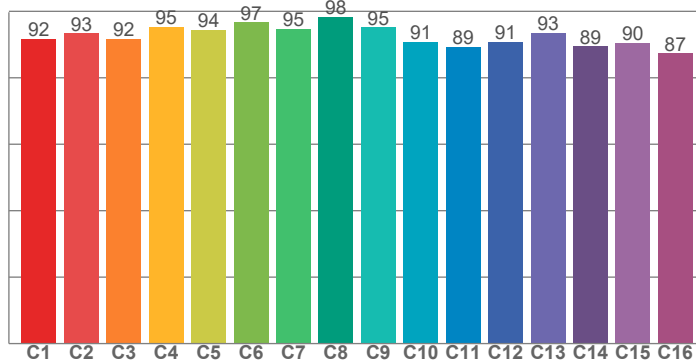


Power

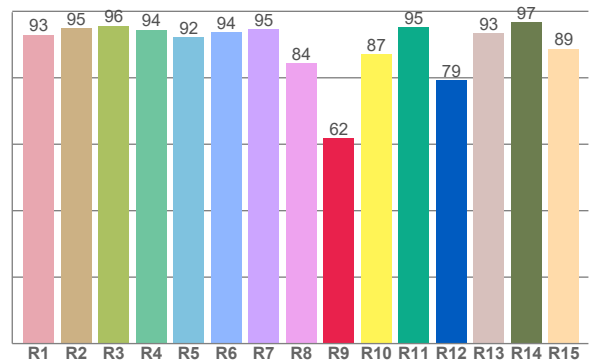




TM30: 92.7



CRI: 92.9 (R1-R8)



CRI R values, only R1-R8 are used to calculate final CRI value

R1	R2	R3	R4	R5	R6	R7	R8	R9	R10	R11	R12	R13	R14	R15
93.0	94.8	95.6	94.5	92.3	93.7	94.5	84.4	61.8	87.1	95.2	79.3	93.3	96.8	88.8

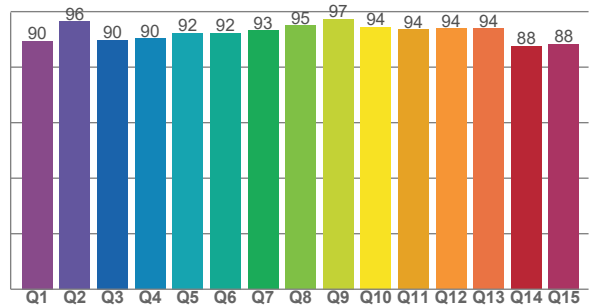
TM30 C values, 16 binned values out of total of 99 C values

C1	C2	C3	C4	C5	C6	C7	C8	C9	C10	C11	C12	C13	C14	C15	C16
91.7	93.4	91.7	95.3	94.5	96.6	94.8	98.4	95.1	90.7	89.3	90.8	93.5	89.5	90.4	87.4

CQS Q values

Q1	Q2	Q3	Q4	Q5	Q6	Q7	Q8	Q9	Q10	Q11	Q12	Q13	Q14	Q15
89.5	96.5	89.7	90.3	92.3	92.3	93.2	95.0	97.3	94.5	93.6	93.9	93.9	87.5	88.3

CQS: 91.9



Color parameters

Color temperature	Color rendering index	Red component	Color fidelity	Color gamut	Color quality scale	Color coordinate cie 1931	Color coordinate cie 1931	Color coordinate	Color coordinate	Color deviation from black body
CCT	CRI	CRI R9	TM30 Rf	TM30 Rg	CQS	x	y	u	v	Δuv
3050 K	92.9	61.8	92.7	99.1	91.9	0.437	0.410	0.248	0.349	0.0025

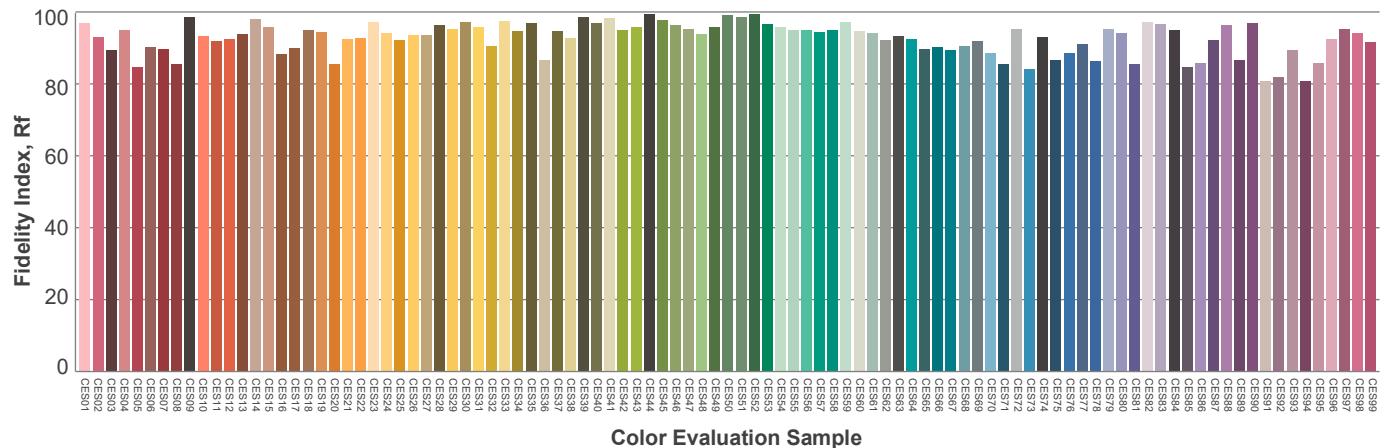
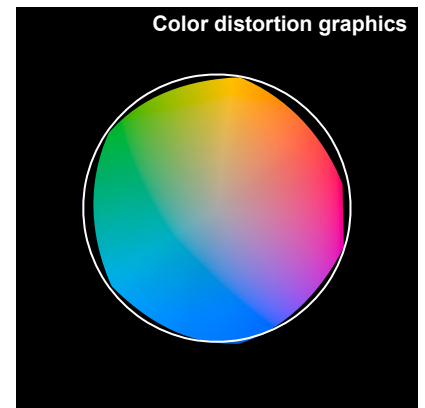
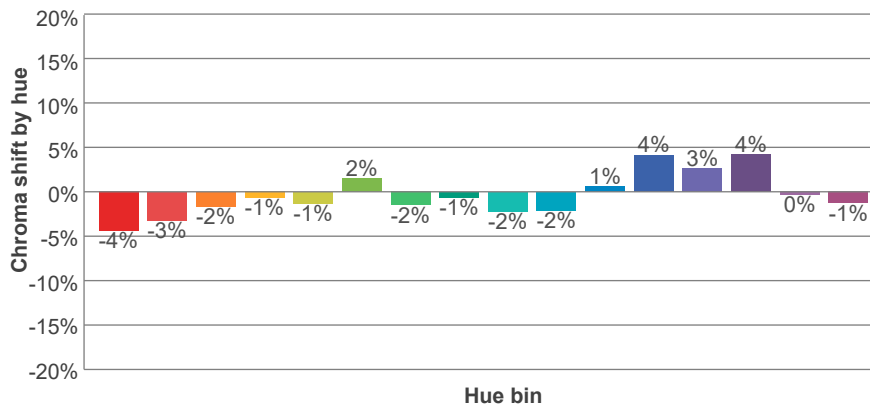
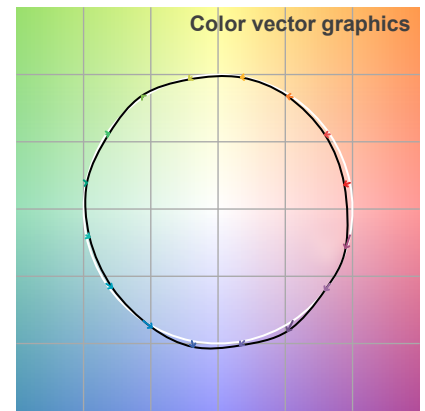
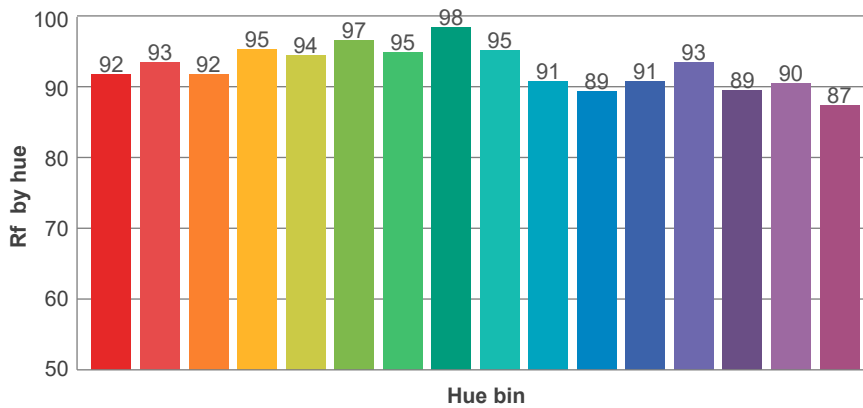
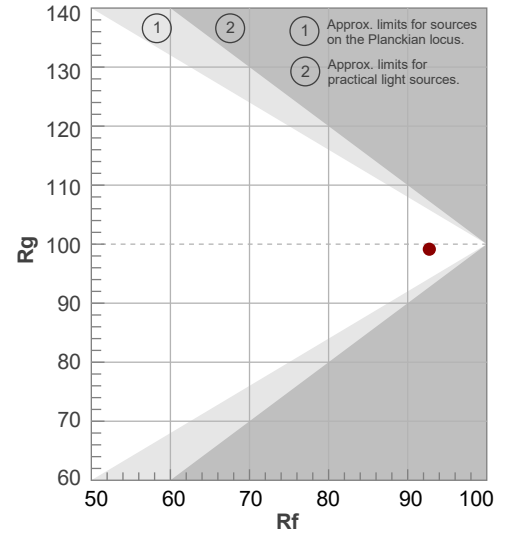
Rf 92.7

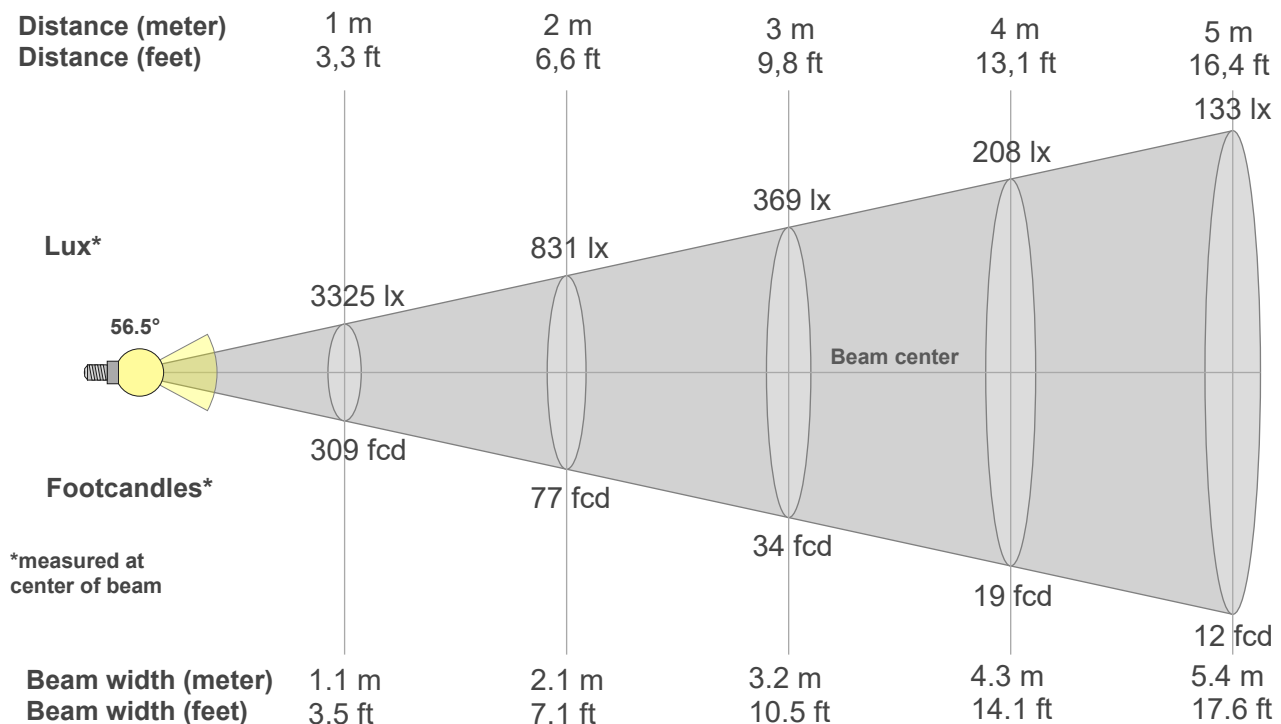
Fidelity index Rf

Rg 99.1

Gammut index Rg

Hue Bin	R _f	Graphic shifts (%)	
		Chroma	Hue
1	92	-4%	-1%
2	93	-3%	2%
3	92	-2%	4%
4	95	-1%	2%
5	94	-1%	2%
6	97	2%	0%
7	95	-2%	-2%
8	98	-1%	0%
9	95	-2%	2%
10	91	-2%	5%
11	89	1%	8%
12	91	4%	2%
13	93	3%	-4%
14	89	4%	-7%
15	90	0%	-6%
16	87	-1%	-10%





Beam intensities from 1-20m

1m	2m	3m	4m	5m	6m	7m	8m	9m	10m	11m	12m	13m	14m	15m	16m	17m	18m	19m	20m
3.3ft	6.6ft	9.8ft	13.1ft	16.4ft	19.7ft	23ft	26.2ft	29.5ft	32.8ft	36.1ft	39.4ft	42.7ft	45.9ft	49.2ft	52.5ft	55.8ft	59.1ft	62.3ft	65.6ft
3325lx	831lx	369lx	208lx	133lx	92lx	68lx	52lx	41lx	33lx	27lx	23lx	20lx	17lx	15lx	13lx	12lx	10lx	9lx	8lx
308.9fcd	77.2fcd	34.3fcd	19.3fcd	12.4fcd	8.6fcd	6.3fcd	4.8fcd	3.8fcd	3.1fcd	2.6fcd	2.1fcd	1.8fcd	1.6fcd	1.4fcd	1.2fcd	1.1fcd	1fcd	0.9fcd	0.8fcd

Intensities in 0° c-plane

0°	2°	4°	6°	8°	10°	12°	14°	16°	18°	20°	22°	24°	26°	28°	30°	32°	34°	36°	38°
3325	3308	3285	3250	3198	3135	3066	2959	2812	2630	2427	2215	2012	1833	1678	1539	1391	1148	818	484
100%	99%	99%	98%	96%	94%	92%	89%	85%	79%	73%	67%	61%	55%	50%	46%	42%	35%	25%	15%

Intensities in 90° c-plane

0°	2°	4°	6°	8°	10°	12°	14°	16°	18°	20°	22°	24°	26°	28°	30°	32°	34°	36°	38°
3325	3320	3297	3260	3217	3169	3086	2976	2835	2660	2454	2244	2037	1842	1679	1543	1396	1154	808	464
100%	100%	99%	98%	97%	95%	93%	90%	85%	80%	74%	67%	61%	55%	51%	46%	42%	35%	24%	14%

Intensities in 180° c-plane

0°	2°	4°	6°	8°	10°	12°	14°	16°	18°	20°	22°	24°	26°	28°	30°	32°	34°	36°	38°
3325	3308	3285	3250	3198	3135	3066	2959	2812	2630	2427	2215	2012	1833	1678	1539	1391	1148	818	484
100%	99%	99%	98%	96%	94%	92%	89%	85%	79%	73%	67%	61%	55%	50%	46%	42%	35%	25%	15%

Intensities in 270° c-plane

0°	2°	4°	6°	8°	10°	12°	14°	16°	18°	20°	22°	24°	26°	28°	30°	32°	34°	36°	38°
3325	3320	3297	3260	3217	3169	3086	2976	2835	2660	2454	2244	2037	1842	1679	1543	1396	1154	808	464
100%	100%	99%	98%	97%	95%	93%	90%	85%	80%	74%	67%	61%	55%	51%	46%	42%	35%	24%	14%

Beam angle 50%	Field angle 10%	Cutoff angle 2,5%	Intensity ratio in 120° cone	Intensity ratio in 90° cone
56.5°	77.8°	86.3°	99.5%	98.4%